

1. Introduction and Motivation

It is almost a truism that China's economic significance has greatly increased during the recent decades. This has unsurprisingly generated additional interest in business cycle movements in China and in the synchronization of the cycles with other countries. In this paper we use meta-analysis techniques in summarizing research on China's business cycle correlation with other countries. Meta-analysis enables one to summarize the findings of previous literature in a systematic way.

We contribute to the literature in several ways. First, we are able to systematically analyze the consensus view of different countries' correlation with the Chinese business cycle. Second, we can discern whether some observable factors related to the authors, methodologies utilized, variables used etc. affect the reported results.

We surveyed 71 individual papers dealing with China's business cycle synchronization. All in all, these papers contained 1894 individual correlation coefficient estimates for China's business cycle with other countries' cycles, as all the papers contained more than one correlation estimate. For many Asian countries (e.g. Japan, Korea, Malaysia, Philippines, Singapore, Hong Kong) we have nearly 200 observations, while the US and Taiwan are each represented by some 130 observations. For European countries we have only a small number of observations.

First, we find that correlation coefficients are relatively high and statistically significant for many countries. This is true both for Asian and non-Asian countries as well as for China's immediate neighbors and ASEAN countries. The result confirms China's eminent position within global and regional production networks. Furthermore, it is possible that China's domestic demand is already so large that it supports exports from many different countries in the region.

Secondly, we find that many attributes related to the publication, authors, methods and variables used, etc. have a definite effect on the reported correlation coefficients. Based on our preferred estimation specification, we e.g. observe that the more recent papers are more likely to report higher correlation coefficients, and that papers that do not have China as a specific focus are more likely to report lower correlation coefficients.

While it is likely that China's growing economic size and importance in global supply chains will increase its business cycle synchronization over the coming years, our results also warn against relying too much on any single estimate of synchronization. As we are able to show, correlation coefficients reported in any single study can be influenced by a set of factors.

The paper is structured as follows. In the next section we discuss meta-analysis as a methodology for summarizing research results. The third section describes our sample, i.e. papers published on the topic. The fourth section examines possible publication bias in our sample. The fifth section provides

a statistical analysis of the literature on Chinese business cycle correlation, and the sixth section concludes.

2. Meta-Analysis

Meta-analysis enables one to statistically summarize and aggregate research results on a given topic. It can be characterized as a systematic literature survey in which all the papers published on a given topic are given at least some weight in deriving a 'consensus' or 'aggregate' view on that topic. It is also a means of assessing how characteristics of the authors, variable specifications, data samples etc. affect the reported results.

Stanley (2001) identified different stages in carrying out meta-regressions. First, all the relevant studies are collected in a non-discriminatory manner in order to prevent any distortions from publication selection. Second, the resulting sample is specified in terms of dependent and independent variables. Our independent variable is the correlation coefficient between an economic indicator's cyclical movements in China and in another country. Some of the independent variables are dummy variables representing theoretical background, data dimension, author affiliations, construction of variables, and publication format. After the tracking down and coding of relevant factors from the research papers is completed, a researcher can present e.g. statistics on the variables and run the actual meta-regressions.

While meta-analysis has a long history e.g. in medicine and engineering, its use in economics is relatively new. In principle, all empirical studies that reports estimates of some economic phenomena or variable can be summarized with the help of meta-analysis. For example, and related to the issue at hand, Fidrmuc and Korhonen (2006) conducted meta-analysis on papers assessing the business cycle correlation of the new EU countries with the euro area. They found that the degree of correlation differs substantially between the countries, but also that e.g. researchers' affiliations clearly affect the reported correlation coefficients. For example, when researchers were affiliated with one of the central banks of the new EU countries, their reported correlation coefficients were lower on average. In a related study, Rose (2008) conducted meta-analysis on papers assessing the link between business cycle correlation and trade. His assessment of the literature is that increased trade links lead to higher business cycle correlation.

As noted, any empirical estimates can be summarized this way, including money demand (e.g. Knell and Stix, 2005), the link between financial liberalization and growth (Bumann et al., 2012), alcohol's price and income elasticities (Nelson, 2013), misalignment of the renminbi (Korhonen and Ritola, 2011) and so on.

3. Literature on China's Business Cycle Synchronization

As mentioned earlier, recent years have witnessed the publication of several papers related to China's business cycle synchronization with other countries. In this section we first discuss some broad trends in this strand of literature and then present our dataset, i.e. the 74 related papers that we have surveyed.

3.1 Recent Papers

One can divide papers that assess papers dealing with China's business cycle synchronization in many ways. For example, there are several papers dealing with a large selection of countries and their pair-wise business cycle correlation in the Asia-Pacific region. On the other hand, some papers focus more specifically on China's business cycle synchronization with other countries (and do not consider those countries' synchronization with each other). In a paper that is aimed more broadly at business cycle synchronization in the Asia-Pacific region, Kim et al. (2011) calculate average correlation coefficients for many groupings of countries, and find, for example, that the cyclical component of GDP in the East Asian emerging countries (excluding China) had an average correlation of 0.62 with the G7 countries before the financial crisis, but they also report individual countries' correlation coefficients with China. Gong and Kim (2013) calculate all the pair-wise correlations for output movements among 13 countries in the Asia-Pacific region, and then explain these correlations in terms of both bilateral trade and financial linkages between countries. They find that stronger links are associated with higher observed business cycle synchronization. On the other hand, Wang (2011) looks at business cycle synchronization from the Chinese perspective, and calculates several measures of GDP growth correlation of China with Taiwan.

3.2 Meta Dataset and Meta Statistics

We started our project by collecting papers on China's business cycle correlation from a variety of economics paper depositories. Sources and key words used in the search are depicted in greater detail in Appendix A. Our sample consists of 31 papers in English and 40 in Chinese, published between 2000 and 2013. A full listing of the studies can be found in Appendix B.

We decided to include also papers not yet published in journals, to get a more complete picture of the literature. Tables 1 and 2 give some descriptive statistics for our sample. It should be noted that a paper will usually have correlation coefficients for many different countries vis-à-vis China, but often also many correlation coefficients per country, calculated for different indicators and sometimes based on different methodologies; hence the total number of observations is several times the number of papers. We also observe that the total number of observations is very different across countries. For China's larger Asian neighbors as well as the US, each country is represented by 140 to 200 observations; there are much fewer observations for each of the smaller ASEAN countries. Perhaps

somewhat surprising is the very small number of observations for European countries as well as Australia and New Zealand.

Figure 1, in turn, depicts the evolution in the number of papers published on China's business cycle synchronization over time. It should be noted that we take into account only the most recent version of a given paper, i.e. if it has been published in a journal, earlier working paper versions are ignored in our analysis. We can observe that by 2004 and 2005 there were several papers appearing annually on the topic, and by 2009-2012 the number was again much higher. As our cut-off date for collecting data was mid-2013, the smaller number for 2013 should not be interpreted as a sudden drop in interest on the topic.

4. Funnel Plots and Publication Bias

4.1 Funnel Plots

The meta statistics have already revealed some differences among analyses of business cycle synchronization with China; those published in Chinese versus English, those by authors having versus not having Chinese affiliation. The analysis of economic policy issues is likely to be subject to general expectations. This may lead to an unintended publication bias if authors, reviewers and publishers follow their preferences for statistically strong, significant and theoretically expected results. Moreover, general expectations for results as well as corresponding publication biases may differ as between different countries or regions.

Publication bias is a term often used also for other types of selection bias that lead to estimates that are asymmetrically distributed around a hypothetical effect. It can be visually detected by the so called a funnel plot, which is a scatter diagram displaying a quality indicator (e.g. inverse standard errors pointing to the precision of the estimates) against the estimated effect. If publication bias is insignificant, the funnel plot should look like an inverted funnel and the estimates should vary symmetrically around the true effect. The estimates that are close to the true effect should be characterized by the highest quality indicator (precision). Similarly, the worse estimates should be located in the lower part of the chart. In contrast, if publication selection leads to an overrepresentation of significant results in the sample, the funnel plot becomes asymmetric and excessively wide. Thus, the funnel plots are an intuitive but subjective tool for detecting publication bias. Moreover, asymmetries can also arise due to different factors (e.g. omitted variables, estimation techniques), and they may be wrongly attributed to the publication bias (Stanley, 2005).

Bearing in mind these limitations, we examine the funnel plots for the reported degree of international business cycle synchronization, which are displayed in Figure 2. The precision (y -axis) is usually defined as the inverse standard error. For correlation coefficients, standard errors are not available, but they can be proxied by the inverse number of observations. Therefore, we use the number of observations to measure the quality of publications. Moreover, the underlying degree of business

cycle synchronization can differ by country. Therefore, we present funnel plots by country or relatively small region, if only a few observations are available.

Actually, Figure 2 reveals some fairly important asymmetries, especially for papers which were published in Chinese (see Figure A.1 in the appendix). Less asymmetries can be found for papers published by authors of whom at least one had a Chinese affiliation. However, the English-language papers also generate some atypically shaped funnel plots. The most important such asymmetries appear to relate to Hong Kong and other countries in Southeastern Asia.

4.2 Funnel Asymmetry Test

However, a visual examination of the funnel plots is often not conclusive for detecting asymmetry. To test the symmetry more formally, we employ the funnel asymmetry test (FAT), which is based on the simple meta-regression of available effects and corresponding standard errors (Card and Krueger, 1995; Ashenfelter, Harmon and Oosterbeek, 1999):

$$\frac{1}{2} \left(\frac{1 + \rho_{ij}}{1 - \rho_{ij}} \right) = \tilde{\rho}_i + \beta \frac{1}{T} + \varepsilon_{ij} \quad (1)$$

where the reported correlation coefficients ρ_{ij} have been transformed by Fisher transformation.¹ The quality of the individual reported correlation coefficients is again proxied by the inverse number of observations, T . The country effect, $\tilde{\rho}_i$, is the reported estimate of the country-specific underlying degree of business cycle synchronization, that is the so-called “true” effect, while $1/T$ gives the so-called publication bias. If the estimates are distributed symmetrically around the true effect, $\tilde{\rho}_i$, then the coefficient β should not significantly differ from zero. If, however, there is a tendency to report certain parameter values or significant results, β would be significant and the publication bias would be proportional to $1/T$. Thus, the publication selection can be detected through the relationship between reported effects and the analyzed number of observations in the individual studies.

Following Egger, Smith, Scheider and Minder (1997), we test null hypothesis $\beta = 0$ using the standard and weighted versions of the FAT test. Rejection of the null confirms the presence of publication bias (presence of asymmetry). For estimation we use a fixed-effects model with robust standard errors.

While the funnel plots reveal some asymmetries, Table 3 shows that all test specifications, except for the weighted regressions, fail to reject the null of no publication bias. The same result is obtained if we include only correlations based on GDP or only correlations with the US. Thus, no publication bias

¹ This is done to ensure that there are no problems arising from the fact that correlation coefficient is bounded between -1 and 1. Transformed coefficients are not bounded, and the raw correlation coefficients and transformed coefficients are nearly identical if the absolute value of the correlation coefficient is less than 0.5. In a robustness check we also repeat the estimation with the simple correlation coefficients. Results are very similar, so none of our results depend on our use of the Fisher transformation.

is robustly revealed for the previous literature on business cycles in China and the selected countries. This should lend more credibility to the individual country correlations estimated in the next section.

5. Meta-Regressions and Results

5.1 Baseline Meta-Regression

In this section we employ meta-regressions to assess the degree of China's business-cycle synchronization with other countries. In these regressions we are able to control many objective factors as well as characteristics related to the individual studies and their authors. Most of the variables are included in the form of binary dummies. We can separate these control variables into four groups.

- 1) *Variables related to each publication:* In this group we include publication year, whether the paper was published in a Chinese non-core journal, whether in a journal, whether the focus is solely on China's business-cycle correlation with other countries, number of other-than-China countries included in the analysis, and number of years covered by the paper's data sample.
- 2) *Variables related to authors:* In this group we include dummies for at least one of the authors having affiliation in China as well as with a central bank.
- 3) *Variables related to empirical methodology:* In this group we include dummies for simple correlations in time series models, Blanchard-Quah decomposition, and different filters such as Hodrick-Prescott.
- 4) *Variables related to the indicator of business-cycle synchronization:* In this group we include dummies for GDP, industrial production, supply and demand shocks, and inflation.

The majority of explanatory variables are dummy variables, taking the value one if the specified criterion is fulfilled and zero otherwise. All other variables (e.g., publication year, number of observations, and number of analyzed countries) are demeaned.

Our empirical strategy is as follows. We estimate the following equation, where the reported correlation coefficients ρ_{ij} have again been transformed via Fisher transformation,

$$\frac{1}{2} \left(\frac{1 + \rho_{ij}}{1 - \rho_{ij}} \right) = \tilde{\rho}_i + \sum_{k=1}^K \beta_{ijk} D_{ijk} + \varepsilon_{ij}. \quad (2)$$

Country dummy $\tilde{\rho}_i$ gives the average correlation coefficient for country i , controlling for analyzed K factors (e.g. publication year, variable, methodology, sample size, frequency, author affiliation, journal or not) in publication j . These dummies can be taken as the underlying level of synchronization of the Chinese business cycle with the other economies.

In practice we perform OLS analysis in several steps. We always included the country-fixed effects, but at first added control variables only one group at a time. We report our regression results in Table 4, where the first four columns show results for including control variables related to publication, authors, methodology and variables, respectively. We only report statistically significant coefficients. After this, the fifth column displays our preferred specification, where we include all the control variables that we were significant in the four previous specifications.

Our model selection strategy is based on the general-to-specific approach. First, we include all variables related to the papers. We see that the number of available years (*obsydm*) and the year of publication (*ydm*),² as well as publication not focused on China (*noncn*), have significant and negative effects on the reported degree of business-cycle synchronization. The remaining characteristics have no significant impact. In particular, publication in journals has no clear effect, but publications in Chinese core journals (*jcn*) has a robust positive effect on the results. Potentially the most interesting finding is that the reported level of business-cycle synchronization reveals a time trend. The publications tend to report correlation levels that are higher each succeeding year, by about 2 percentage points, or by 0.1 after a decade.

In the second step, we include the explanatory variables describing authors' characteristics. Publications in Chinese language (*cnlang*) are found to report higher degrees of business-cycle correlation. Similarly, Chinese journals (*jcn*) tend to publish results reporting higher degrees of business-cycle synchronization. In turn, no such effect is found for Chinese authors in general. Authors affiliated with the central bank reported somewhat smaller correlations of business cycles, albeit this effect does not seem to be robust. Somewhat surprisingly, journals (except for core Chinese journals) have no significant effects on reported levels of correlation. Master thesis (but not PhD thesis) may have a positive but not sufficiently robust influence.

Next, we include characteristics describing the methods of analysis. We see that time series models (*tser*) are positively and robustly related to the reported results. Finally, we include characteristics describing the definition of analyzed variables. This shows that inflation and demand shocks (note that demand shocks are estimated via decomposition of GDP growth and inflation) have robust negative impacts on the degree of business-cycle synchronization.

In the last step, we include only those variables which were significant at least at the 10% level in the individual analysis. We drop one by one the least significant variable. Thus we proceed to the final

² Number of available years seems to be a better explanatory variable than the number of observations. Similarly, the year of publication has more informative power than the last year of analyzed data.

specification, showing that the degree of business-cycle synchronization is determined mainly by the characteristics related to the methods and variable definition, number of years, and non-Chinese focus of the publication. Chinese journals are confirmed to have a positive bias on published correlation levels. This variable is more robust than Chinese-language publications³ or publications of authors with at least one Chinese affiliation.

Finally, we present country-fixed effects in the second part of Table 4. Most interestingly, there are surprisingly small differences between the individual country effects, which are positive and significant for all countries with the exception of Brunei and Myanmar. According to the preferred specification, the highest level of business-cycle synchronization is found for Vietnam and New Zealand; however, only a few studies (7 and 3 papers, respectively) are available for these countries. Not surprisingly, a comparable level of correlation is reported especially for Hong Kong, Singapore, Taiwan, but also for the USA. Thus, the findings for meta regression reject the popular decoupling hypothesis (see Kose et al., 2012).

5.2 Robustness Checks

Tables 5 to 7 show results for our robustness checks. First, we use weighted regression, using the number of observations in the underlying studies as weights. The idea here is that studies with more observations are perhaps somewhat more reliable, *ceteris paribus*. Second, we use median regression as an alternative estimation methodology. This means that instead of minimizing the sum of squared residuals as in OLS, median regression minimizes the sum of absolute residuals. This reduces the effect of large outliers on the estimated coefficients. Third, robust regression uses Cook's distance measure to underweight the largest outliers. And fourth, we include random effects for individual studies to account for the possible remaining cross-sectional dependence between observations in the same study.

We see that the explanatory variables remain similar to those in our preferred specification. Most importantly, the dummy for publications in the core Chinese journals (*jcn*) is no longer significant in models designed to deal with outliers, that is, in the median regression, robust regression, and the regression with studies' random effects. This implies that the positive bias found for publications in the core Chinese journals is mainly because of a few outlier studies.

Country-fixed effects change only slightly from the previous preferred specification, which is also reported in the first column (Table 5). In fact, the correlation for country-fixed effects is over 0.9.

In the next sensitivity exercise, we use only results based on GDP correlations. Correspondingly, a dummy for inflation cannot be used in this specification. Moreover, no data are available for Australia. Year of publication is again the most important determinant of the reported level of business-cycle

³ Note that our data set includes one English-language publication in a core Chinese journal.

correlation, but its impact is smaller.

Finally, we include only the level of business-cycle synchronization with the US. Although this country dominates the literature, the number of observations becomes relatively small (132 reported correlation coefficients). As before, the time trend in the literature is the most important determinant of business-cycle synchronization. Moreover, its coefficient is even larger than in the previous analysis (up to 4 percentage points per year).

5.3 Discussion of Results

We mention two interesting findings from our analysis. First, the previous literature devoted much attention to the so-called decoupling hypothesis. While this hypothesis has been widely accepted in the literature, we show that the available body of evidence actually rejects this hypothesis, at least for China. In particular, we can see that China's business-cycle correlations with other countries have increased over the years. On average, each year the reported correlation increases by about 1.5-3 percentage points, possibly even more if the US is considered.

Second, we find a significant publication bias between Chinese and other publications. However, we show that this bias can be attributed more readily to the Chinese media (originating mainly from the core Chinese journals) than to Chinese authors. In particular, there seems to be no publication bias in English language publications of authors having affiliations in China. Moreover, the differences seem to be mainly due to a few studies (outliers).

6. Conclusions

We have reviewed recent literature on China's business-cycle synchronization with other countries with the help of meta-analysis techniques. We make several contributions. First, we compare English and Chinese language literature and display some differences between these literature streams. Second, we observe that, on average, China's business-cycle synchronization with its neighbors in the Asia-Pacific region is relatively high, whatever the variable used. Moreover, business-cycle synchronization with the US is also high, speaking against the so-called decoupling hypothesis. For example, in comparison with estimates for business-cycle correlation between the euro area and the new EU countries (Fidrmuc and Korhonen, 2006), Asian business-cycle synchronization seems relatively high for many countries. On the other hand, the scarcity of observations for European countries is somewhat surprising.

Third, we were able to ascertain that many factors related to the studies and their authors have a clear effect on the reported correlation coefficients. For example, studies that do not have a specific China-focus report consistently lower correlation coefficients. Also using inflation data results in lower correlation coefficients.

To conclude, our results also warn against accepting results from any single study without some caution, as many factors can influence the reported correlation coefficient. Nevertheless, it is clear that China's business-cycle correlations with other countries – especially those in Asia and the US – are already relatively high and are increasing.

References

- Bumann, S., N. Hermes and R. Lensink (2012), "Financial Liberalization and Economic Growth: A Meta-Analysis," Technical Report, London: EPPI-Centre, Social Science Research Unit, Institute of Education, University of London.
- Fidrmuc, J. and I. Korhonen (2006), "Meta-Analysis of the Business Cycle Correlation between the Euro Area and the CEECs," *Journal of Comparative Economics*, 34: 518-37.
- Kim, S., J-W. Lee and C.-Y. Park (2011), "Emerging Asia: Decoupling or Recoupling," *The World Economy*, 34: 23-53.
- Knell, M. and H. Stix (2005), "The Income Elasticity of Money Demand: A Meta Analysis of Empirical Results," *Journal of Economic Surveys*, 19: 513-33.
- Korhonen, I. and M. Ritola (2011), "Renminbi Misaligned - Results from Meta-Regressions," in Y.W. Cheung and G. Ma, eds., *Asia and China in the Global Economy*, Singapore: World Scientific.
- Kose, M. A., C. Otrok and E. Prasad (2012), "Global Business Cycles: Convergence or Decoupling?" *International Economic Review*, 53(2): 511–38. doi:10.1111/j.1468-2354.2012.00690.x.
- Nelson, J. P. (2013), "Meta-Analysis of Alcohol Price and Income Elasticities - with Corrections for Publication Bias," *Health Economics Review*, 3(17).
<http://www.healtheconomicsreview.com/content/3/1/17>.
- Rose, A. K. (2008), "Is EMU becoming an Optimum Currency Area? The Evidence on Trade and Business Cycle Synchronization," mimeo.
- Stanley, T. D. (2001), "Wheat from Chaff: Meta-Analysis as Quantitative Literature Review," *Journal of Economic Perspectives*, 15: 131-50.
- Stanley, T. D. (2005), "Beyond Publication Bias," *Journal of Economic Surveys*, 19: 309-45.
- Wang, H. (2011), "Study on the Co-movement of Business Cycles of Both Sides across the Taiwan Strait," (海峡两岸经济周期协同性的现状与趋势), *International Economics and Trade Research*, 27: 33-9.

Table 1. Meta Statistics by Paper

	Chinese-language	English-language	Total
Number of papers	40	31	74
Number of observations	996	898	1894
Author with Chinese affiliation	100%	29%	70%
Journal papers	38	15	54
Business cycle correlation, all papers	0.160 (0.410)	0.087 (.275)	0.125 (0.354)
Bus. cycle cor., authors with Chinese affiliation	0.160 (0.410)	0.109 (0.286)	0.146 (0.380)
Bus. cycle correlation, journal papers	0.157 (0.408)	0.102 (0.284)	0.138 (0.372)

Table 2. Meta Statistics by Country

	Number of papers	Number of observations	Share of observ. in Chinese publications	Mean correlation
United States	24	132	63%	0.245
Hong Kong	40	187	44%	0.172
Japan	49	178	50%	0.056
Taiwan	31	144	49%	0.146
Korea	48	185	50%	0.121
Singapore	50	193	52%	0.157
Philippines	48	183	50%	0.029
Indonesia	51	187	51%	0.088
Malaysia	51	190	52%	0.143
Thailand	48	182	51%	0.139
Brunei	4	20	100%	-0.002
Cambodia	5	20	80%	0.101
Myanmar	6	26	77%	-0.052
Laos	7	26	77%	0.140
Vietnam	7	27	78%	0.316
Germany	2	2	100%	0.378
Russia	1	1	100%	0.226
Australia	2	5	0%	-0.082
New Zealand	3	6	0%	0.313

Table 3. Funnel Asymmetry Test

A. OSL Estimation

	(1)	(2)	(3)	(4)	(5)	(6)
	All observations	English language	Chinese language	Core Chinese journals	GDP bus cycles	USA
1/T	0.261 (0.378)	0.756 (0.463)	-0.312 (0.495)	-0.393 (0.510)	-0.045 (0.486)	-0.211 (0.890)
USA	0.267*** (0.049)	0.243*** (0.054)	0.320*** (0.074)	0.391*** (0.080)	0.332*** (0.062)	0.301*** (0.058)
Hong Kong	0.189*** (0.034)	0.135*** (0.038)	0.261*** (0.055)	0.238*** (0.078)	0.262*** (0.062)	
Taiwan	0.159*** (0.035)	0.101*** (0.034)	0.240*** (0.061)	0.303*** (0.088)	0.186*** (0.065)	
Philippines	0.038 (0.042)	-0.029 (0.040)	0.124* (0.073)	0.214** (0.103)	-0.043 (0.091)	
Thailand	0.157*** (0.036)	0.090** (0.038)	0.239*** (0.059)	0.228*** (0.075)	0.220*** (0.071)	
Indonesia	0.103** (0.041)	0.058 (0.039)	0.166** (0.071)	0.331*** (0.096)	0.112 (0.095)	
Malaysia	0.176*** (0.039)	0.091** (0.042)	0.274*** (0.064)	0.356*** (0.096)	0.181** (0.074)	
Japan	0.067* (0.039)	0.007 (0.040)	0.144** (0.067)	0.075 (0.110)	0.078 (0.078)	
Korea	0.140*** (0.038)	0.078** (0.039)	0.229*** (0.065)	0.302*** (0.098)	0.166** (0.070)	
Singapore	0.183*** (0.037)	0.098*** (0.034)	0.283*** (0.064)	0.254*** (0.086)	0.253*** (0.078)	
Brunei	-0.038 (0.109)		0.016 (0.114)	0.079 (0.051)	-0.033 (0.153)	
Cambodia	0.090 (0.093)	-0.260 (0.202)	0.216** (0.096)	0.629*** (0.051)	0.115 (0.121)	
Myanmar	-0.070 (0.131)	-0.073 (0.113)	-0.020 (0.165)		0.001 (0.217)	
Laos	0.221* (0.127)	-0.088 (0.082)	0.363** (0.162)	0.643*** (0.051)	0.448** (0.201)	
Vietnam	0.429*** (0.136)	-0.012 (0.091)	0.604*** (0.164)	0.947*** (0.051)	0.591*** (0.195)	
Germany	0.381*** (0.112)		0.436*** (0.114)	0.298*** (0.051)	0.410*** (0.115)	
Australia	-0.112 (0.171)	-0.141 (0.171)				
New Zealand	0.323*** (0.088)	0.296*** (0.088)			0.422*** (0.016)	
Russia	0.206*** (0.034)		0.258*** (0.045)		0.234*** (0.044)	
No of obs.	1,894	898	996	398	735	132
R ²	0.122	0.135	0.139	0.208	0.131	0.001

Note: *, **, and *** stand for significance at the 10%, 5%, and 1% level, respectively. Roust standard errors are in parentheses.

Table 3. Continued

B. Weighted Least Squares

	(7) All observations	(8) English language	(9) Chinese language	(10) Core Chinese journals	(11) GDP bus cycles	(12) USA
1/T	0.659** (0.321)	-0.292 (0.526)	0.327 (0.438)	1.760*** (0.525)	0.767** (0.388)	1.038 (0.854)
USA	0.226*** (0.033)	0.221*** (0.040)	0.288*** (0.057)	0.224*** (0.069)	0.245*** (0.040)	0.211*** (0.042)
Hong Kong	0.180*** (0.033)	0.196*** (0.049)	0.208*** (0.042)	0.169*** (0.064)	0.230*** (0.049)	
Taiwan	0.119*** (0.028)	0.129*** (0.037)	0.154*** (0.043)	0.125** (0.061)	0.137*** (0.039)	
Philippines	0.037 (0.040)	0.005 (0.040)	0.144* (0.084)	0.072 (0.098)	-0.072 (0.094)	
Thailand	0.134*** (0.036)	0.130*** (0.048)	0.192*** (0.058)	0.064 (0.056)	0.121** (0.049)	
Indonesia	0.081** (0.034)	0.069* (0.038)	0.153** (0.064)	0.125* (0.073)	0.033 (0.055)	
Malaysia	0.171*** (0.041)	0.164*** (0.054)	0.233*** (0.064)	0.220*** (0.072)	0.113* (0.061)	
Japan	0.041 (0.038)	0.070 (0.047)	0.049 (0.065)	-0.041 (0.086)	-0.007 (0.068)	
Korea	0.137*** (0.033)	0.142*** (0.042)	0.188*** (0.054)	0.197** (0.078)	0.131*** (0.045)	
Singapore	0.146*** (0.034)	0.129*** (0.035)	0.225*** (0.070)	0.104* (0.062)	0.163** (0.067)	
Brunei	-0.033 (0.081)		-0.015 (0.083)	-0.136*** (0.052)	-0.062 (0.108)	
Cambodia	0.008 (0.092)	-0.230 (0.202)	0.138* (0.079)	0.414*** (0.052)	0.047 (0.082)	
Myanmar	-0.036 (0.076)	-0.031 (0.112)	-0.004 (0.102)		0.050 (0.116)	
Laos	0.087 (0.085)	-0.057 (0.080)	0.209* (0.119)	0.428*** (0.052)	0.285** (0.141)	
Vietnam	0.335*** (0.111)	0.018 (0.092)	0.557*** (0.133)	0.732*** (0.052)	0.604*** (0.158)	
Germany	0.350*** (0.111)		0.382*** (0.114)	0.083 (0.052)	0.340*** (0.114)	
Australia	-0.147 (0.106)	-0.102 (0.109)				
New Zealand	0.269*** (0.097)	0.311*** (0.102)			0.395*** (0.013)	
Russia	0.170*** (0.029)		0.200*** (0.040)		0.160*** (0.035)	
No of obs.	1,894	898	996	398	735	132
R ²	0.134	0.140	0.154	0.196	0.162	0.010

Note: *, **, and *** stand for significance at the 10%, 5%, and 1% level, respectively. Roust standard errors are in parentheses.

Table 4. Meta Regression, Model Selection

	(1) publication	(2) author	(3) method	(4) variable	(5) preferred
obsydm	-0.002** (0.001)				
nocntrdm	-0.008 (0.007)				
ydm	0.025*** (0.003)				0.022*** (0.003)
phd	0.017 (0.099)				
thesis	0.130* (0.070)				
journal	0.045 (0.038)				
jcn	0.054* (0.027)				0.085*** (0.029)
wp	-0.025 (0.045)				
noncn	-0.081* (0.039)				-0.132*** (0.037)
west		0.011 (0.017)			
Chinese		0.024 (0.022)			
cnlang		0.092*** (0.014)			
univ		-0.052 (0.033)			
cbank		-0.125** (0.046)			
quarterly			-0.006 (0.020)		
cor			0.064 (0.038)		
tser			0.219** (0.087)		0.186*** (0.063)
bandq			0.066 (0.058)		
filter			0.095 (0.071)		
gdp				-0.005 (0.029)	
indprod				0.097 (0.072)	
demand				-0.067** (0.031)	
supply				-0.008 (0.028)	
infl				-0.274*** (0.049)	-0.170*** (0.047)

Table 4. Continued (Country Effects)

	(1) publication	(2) author	(3) method	(4) variable	(5) preferred
USA	0.196*** (0.055)	0.263*** (0.036)	0.208*** (0.049)	0.290*** (0.019)	0.285*** (0.019)
Hong Kong	0.240*** (0.043)	0.204*** (0.036)	0.136** (0.050)	0.231*** (0.021)	0.308*** (0.027)
Taiwan	0.192*** (0.043)	0.167*** (0.036)	0.106* (0.051)	0.196*** (0.021)	0.251*** (0.025)
Philippines	0.086** (0.037)	0.046 (0.036)	-0.018 (0.050)	0.077*** (0.021)	0.144*** (0.032)
Thailand	0.202*** (0.037)	0.163*** (0.036)	0.101* (0.049)	0.196*** (0.021)	0.261*** (0.031)
Indonesia	0.148*** (0.037)	0.110*** (0.036)	0.048 (0.049)	0.142*** (0.021)	0.207*** (0.031)
Malaysia	0.223*** (0.036)	0.181*** (0.036)	0.119** (0.049)	0.214*** (0.021)	0.280*** (0.031)
Japan	0.112*** (0.037)	0.075** (0.035)	0.010 (0.048)	0.107*** (0.021)	0.172*** (0.029)
Korea	0.184*** (0.037)	0.149*** (0.036)	0.086* (0.049)	0.181*** (0.021)	0.247*** (0.030)
Singapore	0.230*** (0.036)	0.189*** (0.036)	0.128** (0.049)	0.223*** (0.021)	0.287*** (0.030)
Brunei	-0.037 (0.032)	-0.077* (0.038)	-0.082* (0.044)	-0.007 (0.026)	0.021 (0.025)
Cambodia	0.120*** (0.029)	0.066* (0.036)	0.038 (0.044)	0.125*** (0.022)	0.184*** (0.032)
Myanmar	-0.040 (0.029)	-0.088** (0.037)	-0.118** (0.044)	-0.032 (0.023)	0.021 (0.028)
Laos	0.248*** (0.030)	0.203*** (0.037)	0.173*** (0.044)	0.259*** (0.023)	0.307*** (0.028)
Vietnam	0.451*** (0.030)	0.411*** (0.037)	0.382*** (0.043)	0.467*** (0.023)	0.511*** (0.027)
Germany	0.366*** (0.038)	0.342*** (0.038)	0.249*** (0.073)	0.411*** (0.029)	0.344*** (0.033)
Australia	0.056 (0.033)	-0.008 (0.042)	-0.161*** (0.045)	-0.081*** (0.012)	0.079** (0.036)
New Zealand	0.481*** (0.032)	0.419*** (0.039)	0.272*** (0.044)	0.350*** (0.013)	0.510*** (0.036)
Russia	0.189*** (0.040)	0.166*** (0.038)	0.011 (0.087)	0.235*** (0.029)	0.117** (0.051)
No of observations	1,894	1,894	1,894	1,894	1,894
R ²	0.174	0.134	0.125	0.132	0.174

Note: *, **, and *** stand for significance at the 10%, 5%, and 1% level, respectively. Roust standard errors are in parentheses.

Table 5. Robustness Analysis – Methods

	(1) CFE	(2) WLS	(3) REML	(4) MR	(5) RR	(6) SRE
ydm	0.022*** (0.003)	0.022*** (0.004)	0.022*** (0.004)	0.016*** (0.003)	0.017*** (0.003)	0.026*** (0.006)
jcn	0.085*** (0.029)	0.015 (0.024)	0.084*** (0.027)	0.027 (0.022)	0.018 (0.020)	0.039 (0.055)
noncn	-0.132*** (0.037)	-0.189*** (0.037)	-0.141*** (0.027)	-0.123*** (0.026)	-0.155*** (0.021)	-0.154*** (0.052)
tser	0.186*** (0.063)	0.232** (0.101)	0.191*** (0.068)	0.102 (0.074)	0.090* (0.050)	-0.039 (0.067)
infl	-0.170*** (0.047)	-0.153*** (0.053)	-0.169*** (0.063)	-0.117*** (0.033)	-0.143*** (0.047)	-0.190*** (0.027)
USA	0.285*** (0.019)	0.348*** (0.025)	0.292*** (0.043)	0.096 (0.197)	0.104 (0.347)	0.162*** (0.045)
Hong Kong	0.308*** (0.027)	0.353*** (0.027)	0.313*** (0.039)	0.067 (0.193)	0.061 (0.346)	0.202*** (0.027)
Taiwan	0.251*** (0.025)	0.277*** (0.024)	0.258*** (0.042)	-0.000 (0.196)	-0.000 (0.347)	0.145*** (0.031)
Philippines	0.144*** (0.032)	0.219*** (0.033)	0.154*** (0.041)	-0.052 (0.196)	-0.094 (0.346)	0.025 (0.039)
Thailand	0.261*** (0.031)	0.315*** (0.033)	0.271*** (0.041)	-0.005 (0.194)	0.004 (0.346)	0.140*** (0.023)
Indonesia	0.207*** (0.031)	0.260*** (0.033)	0.215*** (0.041)	-0.040 (0.193)	-0.045 (0.346)	0.090** (0.044)
Malaysia	0.280*** (0.031)	0.349*** (0.033)	0.287*** (0.040)	-0.001 (0.194)	-0.004 (0.346)	0.163*** (0.023)
Japan	0.172*** (0.029)	0.221*** (0.032)	0.177*** (0.040)	-0.028 (0.194)	-0.093 (0.346)	0.054* (0.030)
Korea	0.247*** (0.030)	0.323*** (0.033)	0.256*** (0.041)	0.003 (0.194)	-0.008 (0.346)	0.144*** (0.028)
Singapore	0.287*** (0.030)	0.325*** (0.032)	0.296*** (0.040)	0.014 (0.194)	0.041 (0.346)	0.171*** (0.026)
Brunei	0.021 (0.025)	0.108*** (0.030)	0.016 (0.105)	-0.148 (0.207)	-0.141 (0.354)	-0.021 (0.058)
Cambodia	0.184*** (0.032)	0.184*** (0.034)	0.193* (0.105)	0.008 (0.225)	0.025 (0.354)	0.130** (0.064)
Myanmar	0.021 (0.028)	0.143*** (0.032)	0.048 (0.093)	-0.160 (0.215)	-0.185 (0.352)	-0.016 (0.081)
Laos	0.307*** (0.028)	0.265*** (0.032)	0.312*** (0.093)	-0.049 (0.224)	-0.067 (0.352)	0.258* (0.154)
Vietnam	0.511*** (0.027)	0.510*** (0.032)	0.522*** (0.091)	0.221 (0.273)	0.262 (0.352)	0.467*** (0.115)
Germany	0.344*** (0.033)	0.387*** (0.060)	0.346 (0.327)	0.324* (0.194)	0.187 (0.420)	0.267*** (0.044)
Australia	0.079** (0.036)	0.111*** (0.035)	0.085 (0.204)	-0.215 (0.279)	-0.147 (0.378)	-0.050** (0.020)
New Zealand	0.510*** (0.036)	0.523*** (0.035)	0.516*** (0.186)	0.284 (0.226)	0.277 (0.373)	0.384*** (0.072)
Russia	0.117** (0.051)	0.128 (0.108)	0.122 (0.463)			
Constant				0.208 (0.194)	0.248 (0.346)	0.160*** (0.045)
No of observations	1,894	1,894	1,894	1,894	1,894	1,894
R ²	0.174	0.205	-	0.046 ^a	0.128	0.076 ^b

Note: CFE – country fixed effects panel regression. REML – Residual Maximum Likelihood. MR – median regression, RR – Cook's Distance Robust Regression, SRE – study random effects regression. a – Pseudo R², b – overall R².

Table 6. Robustness Analysis – GDP Business Cycle

	(1) CFE	(2) WLS	(3) REML	(4) MR	(5) RR	(6) SRE
ydm	0.030*** (0.006)	0.023*** (0.005)	0.029*** (0.008)	0.029*** (0.007)	0.030*** (0.006)	0.035*** (0.006)
jcn	0.129** (0.051)	0.069 (0.052)	0.129** (0.051)	0.019 (0.046)	0.028 (0.041)	0.036 (0.072)
noncn	-0.050 (0.050)	-0.134*** (0.040)	-0.058 (0.048)	-0.151*** (0.043)	-0.149*** (0.038)	-0.091 (0.062)
tser	0.213* (0.119)	0.263** (0.118)	0.216 (0.208)	0.290 (0.184)	0.263 (0.167)	0.157*** (0.056)
USA	0.284*** (0.064)	0.333*** (0.050)	0.291*** (0.071)	0.324* (0.188)	0.318 (0.481)	0.262*** (0.056)
Hong Kong	0.295*** (0.070)	0.362*** (0.055)	0.299*** (0.076)	0.338* (0.189)	0.342 (0.482)	0.317*** (0.037)
Taiwan	0.196*** (0.068)	0.255*** (0.049)	0.207** (0.090)	0.239 (0.196)	0.256 (0.484)	0.233*** (0.045)
Philippines	-0.068 (0.095)	0.034 (0.092)	-0.059 (0.083)	-0.061 (0.193)	-0.066 (0.483)	-0.045 (0.081)
Thailand	0.191** (0.085)	0.225*** (0.061)	0.203** (0.082)	0.224 (0.190)	0.267 (0.482)	0.210*** (0.042)
Indonesia	0.088 (0.097)	0.139** (0.066)	0.096 (0.082)	0.132 (0.193)	0.143 (0.483)	0.111 (0.113)
Malaysia	0.161** (0.077)	0.218*** (0.068)	0.168** (0.080)	0.174 (0.190)	0.169 (0.482)	0.184*** (0.042)
Japan	0.059 (0.087)	0.093 (0.073)	0.061 (0.076)	0.099 (0.190)	0.081 (0.482)	0.048 (0.060)
Korea	0.136* (0.073)	0.234*** (0.054)	0.143* (0.076)	0.248 (0.189)	0.160 (0.481)	0.158*** (0.046)
Singapore	0.236*** (0.090)	0.272*** (0.072)	0.247*** (0.078)	0.251 (0.189)	0.260 (0.482)	0.258*** (0.035)
Brunei	-0.071 (0.155)	0.039 (0.100)	-0.082 (0.154)	0.040 (0.225)	0.028 (0.494)	0.037 (0.067)
Cambodia	0.101 (0.116)	0.162** (0.076)	0.110 (0.172)	0.158 (0.234)	0.164 (0.498)	0.194*** (0.039)
Myanmar	-0.018 (0.232)	0.158 (0.105)	0.014 (0.148)	0.071 (0.223)	0.024 (0.493)	0.088 (0.084)
Laos	0.416** (0.201)	0.390*** (0.122)	0.427*** (0.148)	0.327 (0.223)	0.250 (0.493)	0.508*** (0.171)
Vietnam	0.556*** (0.202)	0.705*** (0.152)	0.576*** (0.144)	0.741*** (0.220)	0.766 (0.492)	0.652*** (0.163)
Germany	0.269*** (0.078)	0.317*** (0.080)	0.272 (0.410)	0.324*** (0.094)	0.309 (0.558)	0.303*** (0.019)
New Zealand	0.509*** (0.050)	0.584*** (0.041)	0.516 (0.554)	0.597*** (0.183)	0.573 (0.658)	0.511*** (0.026)
Russia	-0.014 (0.124)	0.039 (0.122)	-0.007 (0.596)			
Constant				0.013 (0.184)	0.035 (0.480)	0.069 (0.048)
No of observations	735	735	735	735	735	735
R ²	0.160	0.194	-	0.081 ^a	0.158	0.070 ^b

Note: CFE – country fixed effects panel regression. REML – Residual Maximum Likelihood. MR – median regression, RR – Cook's Distance Robust Regression, SRE – study random effects regression. a – Pseudo R², b – overall R².

Table 7. Robustness Analysis – Business Cycle Synchronization with the US

	(1)	(2)	(3)	(4)	(5)	(6)
	OLS	WLS	REML	MR	RR	SRE
ydm	0.035** (0.017)	0.020* (0.011)	0.035* (0.018)	0.042* (0.022)	0.045*** (0.016)	0.038** (0.017)
jcن	0.203 (0.132)	0.025 (0.103)	0.203* (0.110)	0.032 (0.134)	0.050 (0.097)	0.209 (0.147)
noncn	0.207 (0.128)	-0.027 (0.097)	0.205* (0.113)	0.115 (0.138)	0.060 (0.099)	0.216 (0.146)
tser	-0.307** (0.123)	-0.263** (0.119)	-0.313 (0.297)	-0.190 (0.295)	-0.289 (0.254)	-0.310** (0.152)
Constant	0.093 (0.116)	0.247*** (0.090)	0.094 (0.095)	0.166 (0.116)	0.219*** (0.083)	0.077 (0.128)
Observations	132	132	132	132	132	132
R-squared	0.056	0.032	-	0.031 ^a	0.071	0.056 ^b

Note: OLS – ordinary least squares. REML – Residual Maximum Likelihood. MR – median regression, RR - Cook's Distance Robust Regression, SRE – study random effects regression. a – Pseudo R², b – overall R².

Figure 1. Number of Publications by Year

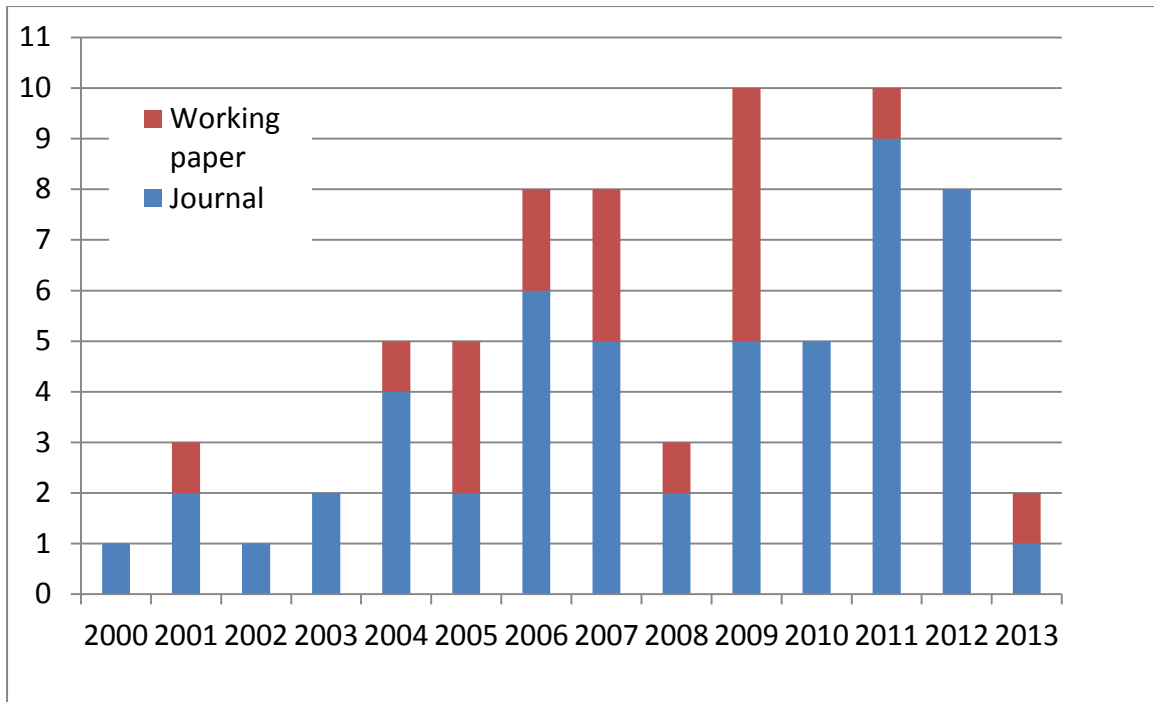
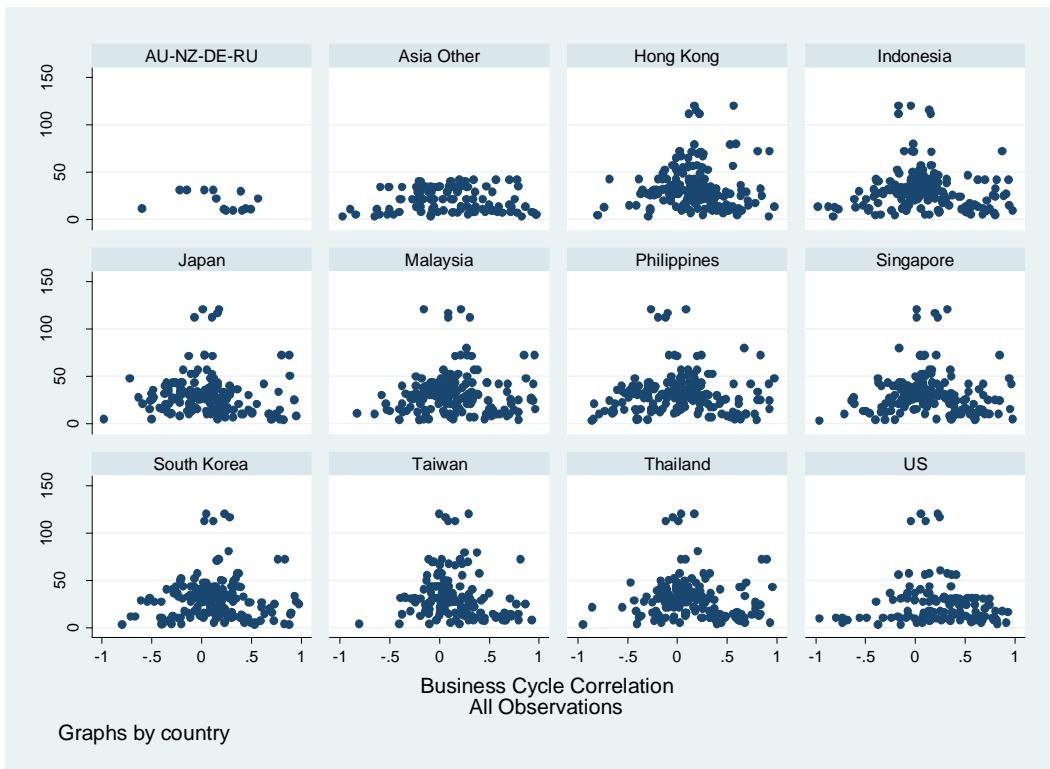


Figure 2. Funnel Plots by Country



Note: AU-NZ-DE-RU – Australia, New Zealand, Germany, and Russia. Other Asia - Brunei, Laos, Vietnam, Myanmar, and Cambodia.

Appendix A. How the Data were Collected

The Chinese-language papers were collected from 中国知网⁴ (CNKI, www.cnki.net), which is the largest publication database online in China. Other databases such as 万方数据 (www.wanfangdata.com.cn) and 维普 (www.cqvip.com) were also searched, with results that were similar and no additional papers were found.

Chinese-language papers were further divided into those published in a ‘Chinese core journal’ and others. A list of the official ‘Chinese core journals’ is published by Peking University Library every four years.⁵ Each publication was examined to see whether it belongs to that time’s core list. For instance, a paper published in 2007, will be checked against the core journal list published in 2004.

The key-word searches were the following:

东亚	经济周期	协动	中国
East Asia	Business cycle	Synchronisation	China
货币联盟	经济一体化	东盟	同步性
Monetary Union	Economic integration	ASEAN	Co-movement

English-language papers were searched in *Google Scholar*, *IDEAS* and *ScienceDirect*. Key words included: business cycle, correlation, Asian monetary union, SVAR, China, synchronisation, co-movement, and different variations of those.

⁴ 中国知网 literally means *China Knowledge Net*.

⁵ The list compilation is based on impact factors and other criteria.

Appendix B. Surveyed Studies (Ordered First by Language and then by Publication Year)

Papers in Chinese

- Xue, J. (薛敬孝), Zhang, B. (张兵), (2001), 论东亚地区经济周期的同期性与非同期性. *Nankai Economic Research* (南开经济研究), Vol 4.
- Tan, Q. (谭庆华), (2002), 对东亚货币一体化的再考察：一个基于经济冲击相关性的实证研究. *World Economic Forum* (世界经济文汇), Vol 6.
- Li, X. (李心丹), Liu, Y. (刘瑛), Liu, T. (刘铁军), (2003), 中国内地和香港能否构成最优货币区研究——来自实证结果的分析. *Fudan Journal* (复旦学报), Vol 5.
- Wan, Z. (万志宏), (2003), 从宏观经济对称性看东亚地区汇率合作的基础. *Nankai Economic Research* (南开经济研究), Vol 3 No. 15.
- Li, X. (李晓洁), (2004), 亚洲货币联盟可行性研究——东亚实际产出波动的冲击分析. *Journal of Finance and Economics* (财经研究), Vol 30 No. 16.
- Ren, Z. (任志祥), Song, Y. (宋玉华), (2004), 中外产业内贸易与经济周期协同性的关系研究. *Statistical Research* (统计研究), Vol 5.
- Du, Q. (杜群阳), Song, Y. (宋玉华), (2005), 东亚经济周期与次区域经济周期存在性检验. *International Trade Issues* (国际贸易问题), Vol 8.
- He, W. (何问陶), Huang, Y. (黄莹), (2005), 人民币与港澳货币一体化的可行性分析. *China Opening Herald* (开放导报), Vol 3.
- Li, X. (李晓), Ding, Y. (丁一兵), (2006), 经济冲击对称性与区域经济合作:东亚与其他区域的比较研究. *Jilin University Journal Social Sciences Edition* (吉林大学社会科学学报), Vol 146 No. 14.
- Sun, T. (孙天琦), Zhang, J. (张军), (2006), 东亚国家（地区）经济周期比较分析(1965-2004). *Xi'an Finance* (西安金融), Vol 5.
- Zhang, B. (张兵), (2006), 中美经济周期的同步性及其传导机制分析. *World Economy Study* (世界经济研究), Vol 10.

- Cheng, C. (程传海), (2007), 东亚经济周期协动的研究. *Asian Economy* (亚太经济), Vol 3.
- Cui, X. (崔晓燕), Wang, S. (王少平), (2007), 东亚最适度通货区的经济可行性研究——一个经济冲击对称性的视角. *Financial Research* (金融研究), Vol 1.
- Cui, X. (崔晓燕), Yang, Y. (杨玉波), Wang, S. (王少平), (2007), 东亚货币一体化的再考察: 一个多变量的结构 VAR 方法. *Journal of Zhongnan University of Economics and Law* (中南财经政法大学学报), 1003- 5230 (2007) 01-0051- 08.
- Yu, X. (喻旭兰), (2007), 经济周期同步性与东亚金融合作的可行性研究. *Economy Study* (经济研究), Vol 10.
- Yu, X. (喻旭兰), (2008), 中国与东盟国家经济周期同步性的实证分析. *Journal of Guangzhou University* (广州大学学报), Vol 7 No. 2.
- Huang, M. (黄梅波), Xiong, A. (熊爱宗), (2009), 东亚经济冲击对称性分析与东亚货币合作. *International Trade Issues* (国际贸易问题), Vol 9.
- Li, X. (李星), (2009), 美国经济周期对中国经济周期的影响研究. *Hunan University*.
- Li, X. (李星), (2009), 中美两国经济周期同步性研究. *The Theory and Practice of Finance and Economics* (财经理论与实践), Vol 30 No. 159.
- Peng, S. (彭斯达), Chen, J. (陈继勇), (2009), 中美经济周期的协动性研究: 基于多宏观经济指标的综合考察. *World Economy* (世界经济), Vol 2.
- Shi, Z. (石柱鲜), Huang, H. (黄红梅), Deng, C. (邓创), (2009), 贸易对中日韩经济周期协同性的影响研究. *Northeast Asian Forum* (东北亚论坛), Vol 18 No. 4.
- Wu, W. (吴宛珊), (2009), 中国与东亚经济周期的协动性和传导机制研究.
- Cai, H. (蔡宏波), (2010), 区域货币合作的经济基础: 东亚和欧洲国家的比较. *World Economy Study* (世界经济研究), No 7.
- Fang, J. (方建春), Du, Q. (杜群阳), (2010), 中国与东亚经济周期的协动性研究. *Northern Economy* (宏观经济), Vol 7.

- Sun, Y. (孙阳), (2010), 贸易模式、贸易密度与经济周期协调性.
- Zhang, L. (张蕾), (2010), 基于经济冲击对称性分析的中国—东盟货币合作新思考. *Shanghai Finance* (上海金融), Vol 3.
- Du, Q. (杜群阳), Zhu, J. (朱剑光), (2011). 产业内贸易对东亚经济周期协调性影响的实证研究. *International Trading Issues* (国际贸易问题), Vol 12.
- Gao, M. (高美玲), (2011), 非线性锁模的经济周期同步性及传导机制问题研究. *Seeker* (求索), Vol 12.
- Shen, J. (沈骥), Cao, X. (曹星), (2011), 中美两国经济周期协调性分析. *Economy and Management* (经济与管理), Vol 25 No. 12.
- Wang, X. (王星懿), (2011), 中外经济周期波动特征及其协调关系的比较研究. *HU Foreign Economic Relations & Trade* (黑龙江对外经贸), Vol 11.
- Xu, Y. (徐妍), (2011), 中、日、美经济周期同步性初探. *Financial Forum* (金融论坛), PBOC, Xining.
- Yang, X. (杨湘波), Tu, S. (涂守才), Yuan, L. (袁乐平), (2011), 大陆与台湾经济周期的同步性实证研究. *Commercial Research* (商业研究), Vol 412.
- Zhang, Y. (张昱), Tian, X. (田兴), (2011), 深化中国——东盟区域金融合作的可行性条件经济周期同步性研究. *Research on Economics and Management* (经济与管理研究), (2012)01-0069-08.
- An, H. (安辉), Zhao, Q. (赵清), (2012), 基于经济冲击对称性的东亚货币合作研究. *Forecasting* (预测), Vol 31 No. 3.
- Cai, X. (蔡彤娟), Sun, J. (孙瑾), (2012), 中国—东盟货币合作的经济基础——基于经济冲击对称性的VAR分析. *Asia Pacific Economy* (亚太经济), Vol 6.
- Shi, J. (石建勋), Zhong, J. (钟建飞), Li, H. (李海英), (2012), 外部供需冲击视角下的东亚货币合作可行性研究. *Journal of Finance and Economics* (财经研究), Vol 38 No. 3.
- Wang, Y. (王悦), (2012), 东亚新兴经济体经济周期特征分析. *Asia Pacific Economy* (亚太经济), Vol 5.
- Yang, Y. (杨音), (2012), 中日印经济协调性及其影响因素研究. *China Securities and Future* (中国证券期货), Vol 10.

Zhang, S. (张素芹), (2012), 亚洲货币合作的经济基础——基于冲击来源的分析. *Modern Management Science (现代管理科学)*, Vol 7.

Shi, J. (石建勋), Guan, Q. (官沁), Li, H. (李海英), (2013), 人民币成为“两岸四地”主导货币的实证研究. *Research on Financial and Economic Issues (财经问题研究)*, Vol 1.

Papers in English

Madden, G., Savage, A., (2000), Assessing the Economic Preconditions for a Yen Bloc. *Australian Economic Papers*, Vol. 39, issue 1, pp. 25-32.

Choe, J., (2001), An impact of economic integration through trade: on business cycles for 10 East Asian countries. *Journal of Asian Economics*, Vol. 12, pp. 569-586.

Ling, H., (2001), Optimum Currency Areas in East Asia: A Structural VAR Approach. *ASEAN Economic Bulletin*, Vol. 18:2, pp. 206-217.

Zhang, Z., Sato, K., McAleer, M., (2001), Is East Asia An Optimum Currency Area? Working paper, National University of Singapore, Singapore.

Ng, T., (2002), Should the Southeast Asian Countries Form a Currency Union? *The Developing Economics*, Vol XL:2, pp. 113-134.

Sung, Y., (2004), An optimum currency area in East Asia: feasibility, coordination, and leadership role. *Journal of Asian Economics*, Vol. 15, pp. 153-169.

Zhang, Z., Sato, K., McAleer, M., (2004), Is a monetary union feasible for East Asia? *Applied Economics*, Vol. 36, pp. 1031-1043.

Sato, K., Zhang, Z., McAleer, M., (2005), Towards an East Asian Monetary Union: An Econometrics Analysis of Shocks. Working paper, School of Accounting, Finance and Economics & FIMARC, Edith Cowan University, Joondalup.

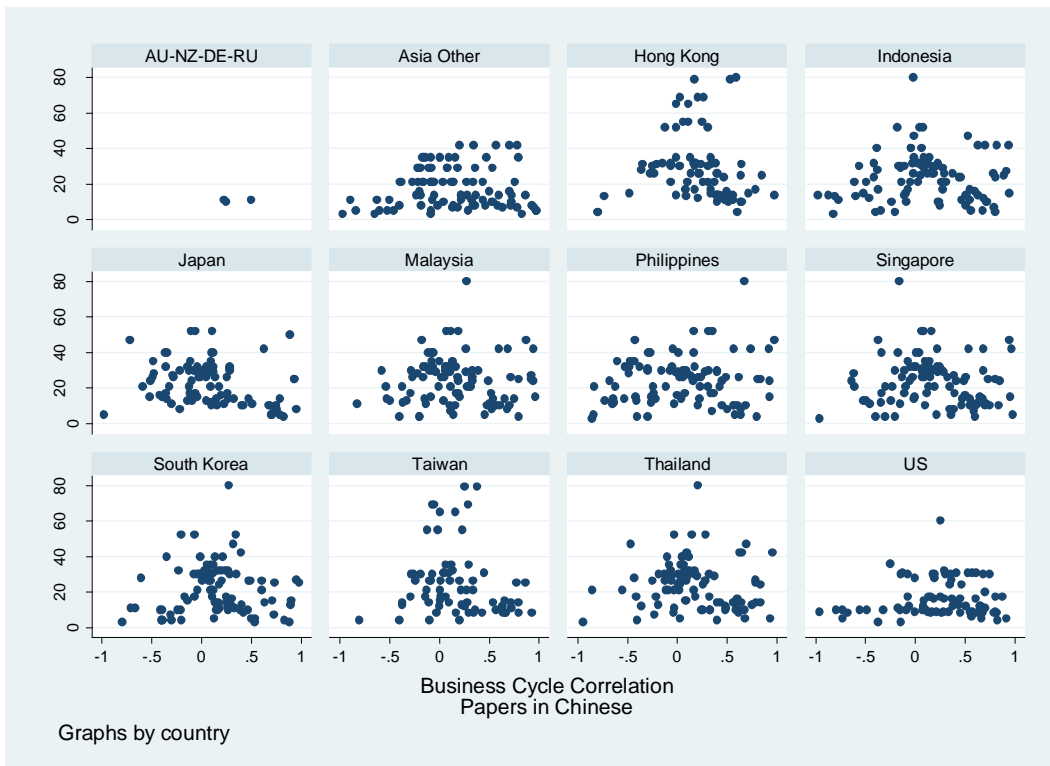
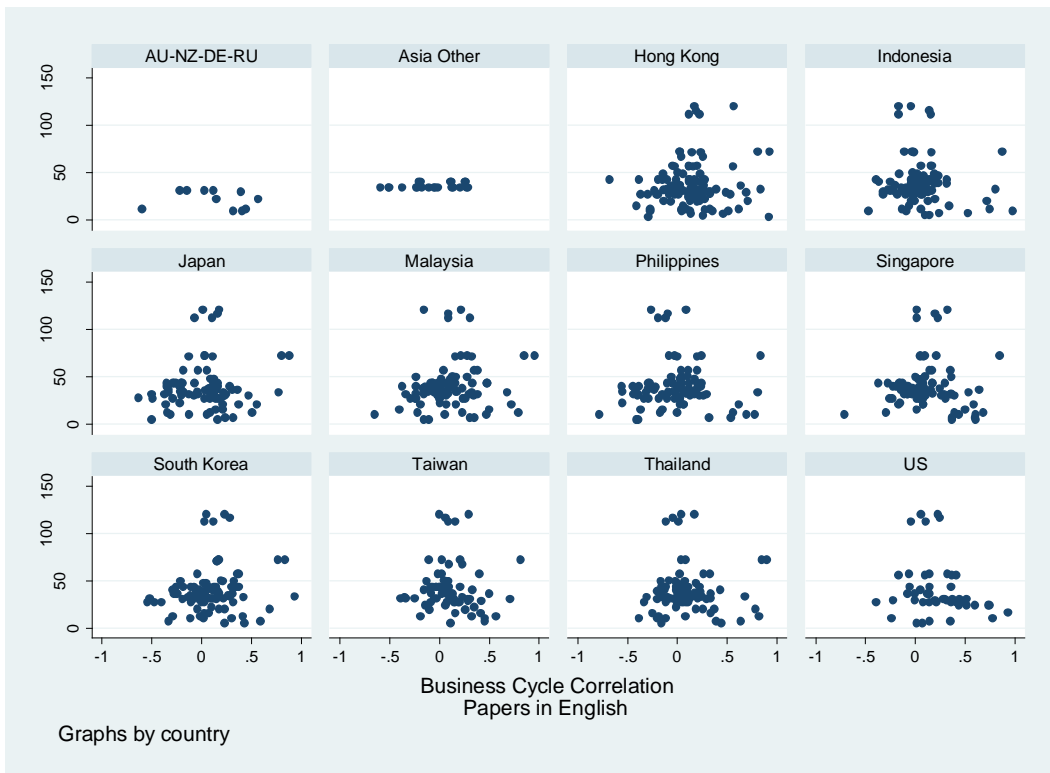
Zhang, J., Lan, Y., (2005), Is East Asia suitable for a Monetary Union? Working Papers Centre for European Studies Fudan University.

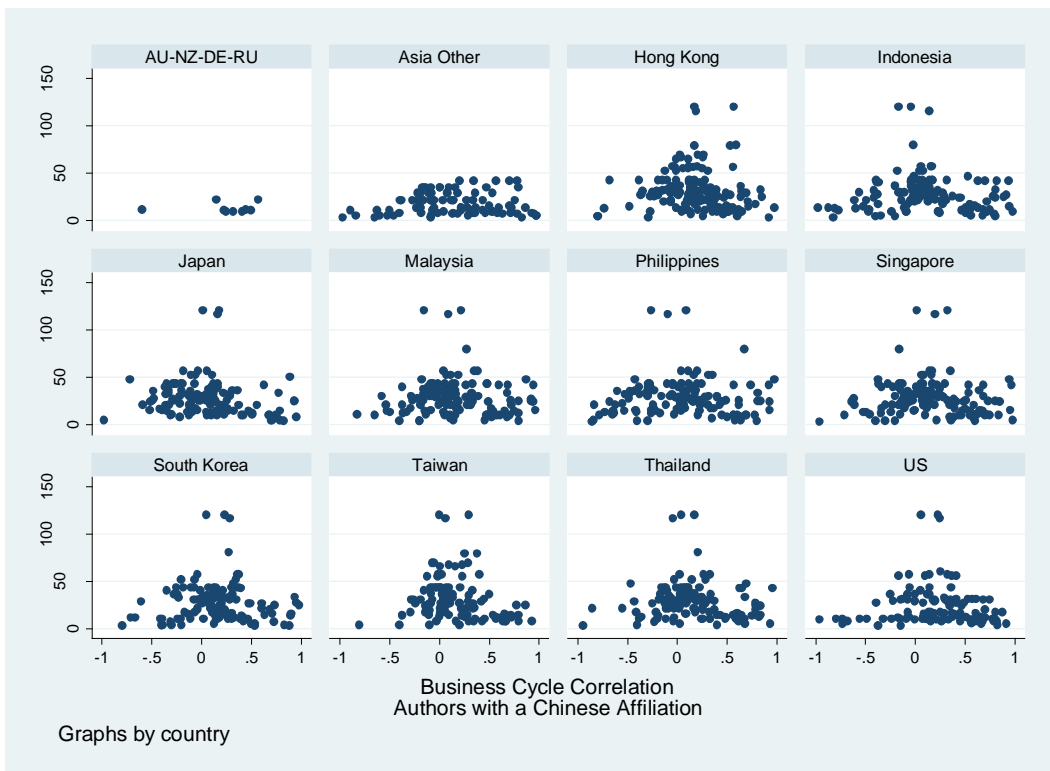
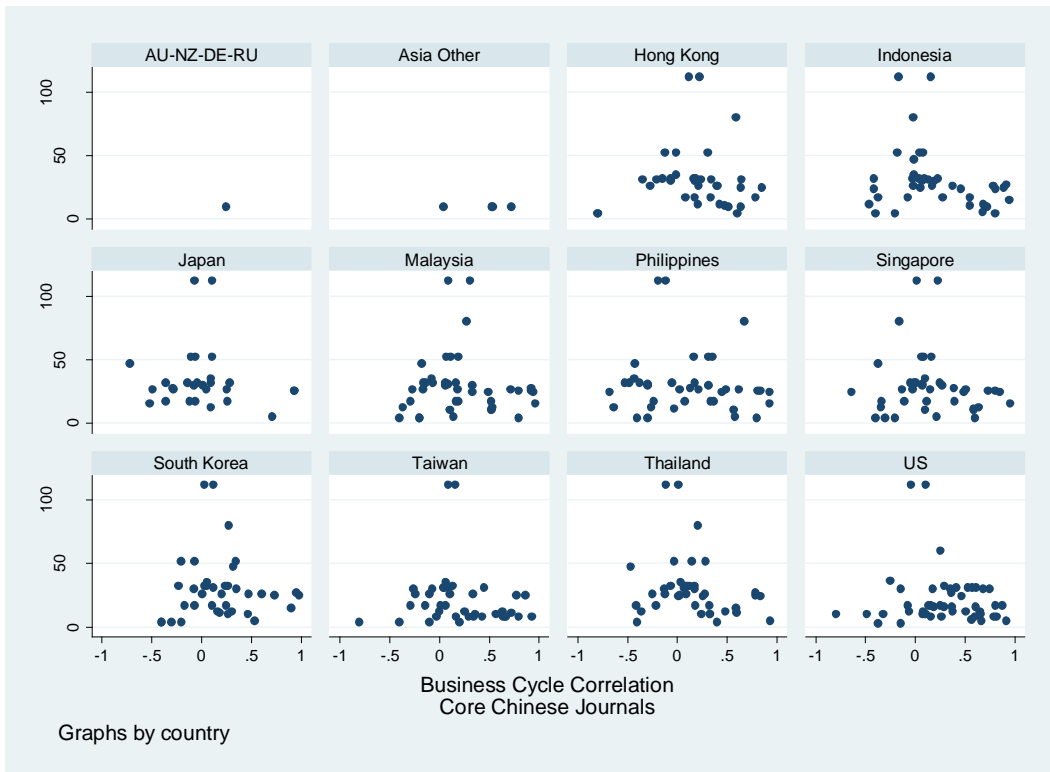
Zhang, Z., Sato, K., (2005), Wither Currency Union in Greater China? Working paper, School of Accounting, Finance and Economics & FIMARC, Edith Cowan University, Joondalup.

- Ahn, C., Kim, H., Chang, D., (2006), Is East Asia Fit for an Optimum Currency Area? An Assessment of the Economic Feasibility of a Higher Degree of Monetary Cooperation in East Asia. *The Developing Economies*, Vol. XLIV:3, pp. 288-305.
- Genberg, H., Liu, L., Jin, X., (2006), Hong Kong's business cycle synchronisation with Mainland China and the US. *Hong Kong Monetary Authority Quarterly Bulletin*, Sep 2006.
- Huang, Y., Guo, F., (2006), Is currency union a feasible option in East Asia? A multivariate structural VAR approach. *Research in International Business and Finance*, Vol. 20, pp. 77-94.
- Kumakura, M., (2006), Trade and business cycle co-movements in Asia-Pacific. *Journal of Asian Economics*, Vol. 17, pp. 622-645.
- Lew, Y., Ku, A.T.L., (2006), Are Countries of Association of Southeast Asia Nations (ASEAN) Candidates of Optimum Currency Area for Optimum Currency Area for Monetary Union? A Structural VAR Approach. *Review of Applied Economics*, Vol. 2, No. 2, pp. 217-228.
- Rana, P., (2006), Economic Integration in East Asia: Trends, Prospects, and a Possible Roadmap. Working Paper Series on Regional Economic Integration, No. 2, Asian Development Bank.
- Tang, H., (2006), An Asian Monetary Union? CAMA Working Paper Series, Centre for Applied Macroeconomic Analysis, the Australian National University, April 2006.
- Xu, X., (2006), A currency union for Hong Kong and Mainland China? *Journal of International Money and Finance*, Vol. 25, pp. 894-911.
- He, D., Cheung, L., Chang, J., (2007), Sense and Nonsense on Asia's Export Dependency and the Decoupling Thesis. Working paper, Hong Kong Monetary Authority.
- Rüffer, R., Sánchez, M., Shen, J., (2007), Emerging Asia's Growth and integration: How Autonomous are Business Cycles? Working paper No. 715, European Central Bank, Frankfurt am Main.
- Bacha, O.I., (2008), A common currency area for ASEAN? Issues and feasibility. *Applied Economics*, Vol. 40, pp. 515-529.
- Khai, V., (2009), Re-examining Symmetry of Shocks for East Asia: Results Using a VAR with Sign Restrictions. Discussion paper, Institute of Economic Research, Hitotsubashi University, Tokyo.
- Moneta, F., Rüffer, R., (2009), Business Cycle Synchronisation in East Asia. *Journal of Asian Economics*, Vol. 20, pp. 1-12.

- Sato, K., Zhang, Z., McAleer, M., (2009), Identifying Shocks in Regionally Integrated East Asian Economies with Structural VAR and Block Exogeneity. *Mathematics and Computers in Simulation*, Vol. 81, issue 7, pp. 1353-1364.
- Genberg, H., Siklos, P., (2010), Revisiting the shocking aspects of Asian monetary unification. *Journal of Asian Economics*, Vol. 21, pp. 445-455.
- Kim, S., Lee, J., Park, C., (2011), Emerging Asia: Decoupling or Recoupling. Conference on International Linkages. Tokyo.
- Takeuchi, F., (2011), The role of production fragmentation in international business cycle synchronization in East Asia. *Journal of Asian Economics*, Vol. 22, pp. 441-459.
- He, D., Liao, W., (2012), Asian Business Cycle Synchronization. *Pacific Economic Review*, Vol. 17, pp. 106-135.
- Kim, S., Lee, J., (2012), Real and Financial Integration in East Asia. *Review of International Economics*, Vol. 20, pp. 332-349.
- Lee, H., Koh, G., (2012), The prospects of a monetary union in East Asia. *Economic Modelling*, Vol. 29, pp. 96-102.
- Fidrmuc, J., Korhonen, I., Batorova, I., (2013), China in the World Economy: Dynamic Correlation Analysis of Business Cycles. *CESifo Economic Studies*, Vol. 59:2, pp. 392-411.

Figure A.1 Funnel Plots for Different Subsamples





Note: AU-NZ-DE-RU – Australia, New Zealand, Germany, and Russia. Other Asia - Brunei, Laos, Vietnam, Myanmar, and Cambodia.